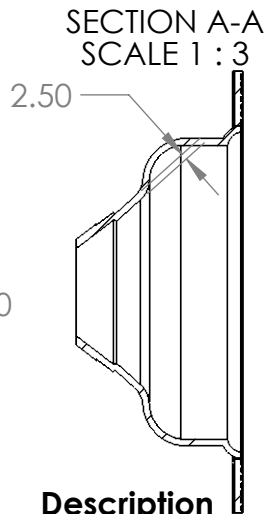
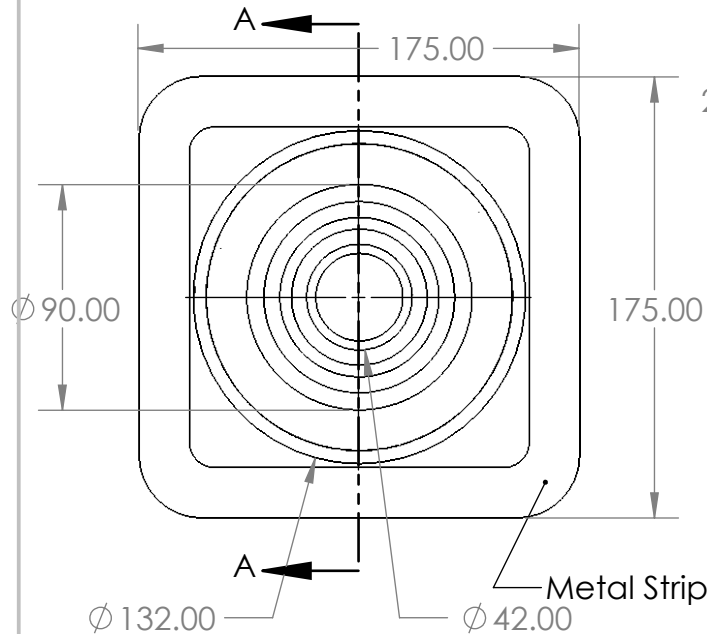


2

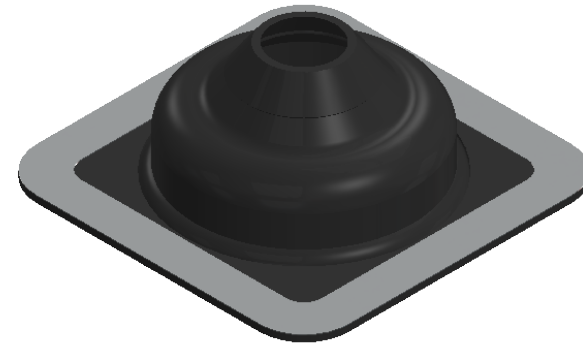
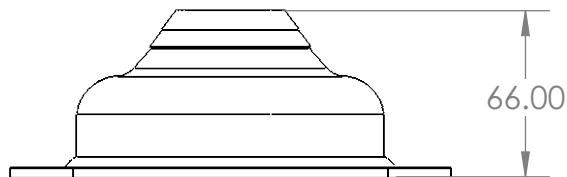
1

MasterFlash No2X Square Base 50 – 70mm Black Large



Description

- EPDM rubber.
- Available in Black
- Size range: 0mm to 1m available.
- All EPDM Master Flash pipe flashings have a high temperature resistance of 135°C intermittently. A red silicone compound is also available, and this product has a high resistance of 260°C intermittently.
- Complies with BAL rating requirements.



FAQs

What is the highest temperature a Master Flash® pipe flashing will handle?

- All EPDM MasterFlash flashings 135°C intermittently.
- A silicone red flashing has a high resistance of 260°C intermittently.

What type of sealant should be used on the Master Flash® flashings?

- A good quality roof & gutter silicone sealant should always be used when installing a Master Flash pipe flashing for metal roofs.

What type of screws should be used to fasten the flashings?

- The use of a self-drilling screw or pop rivet (sealed) is always recommended.

What is the life expectancy of the Master Flash® flashings?

- All Master Flash products carry a 25-year warranty.

What is the maximum roof pitch that the flashings can be used for?

- Most of our products are designed to cater to a roof pitch of 45°. If more is required, then our Master Flash Extreme Angle range is designed with a built in 40° pitch and therefore can handle a roof pitch from 35° – 65°.

Is there a product that can flash a Square Pipe?

- Yes, our Master Flash Square Vent Range is available and will suit penetrations from 20mm – 125mm. Now also available in a lead base option.

UNLESS OTHERWISE SPECIFIED:

DIMENSIONS ARE IN INCHES
TOLERANCES:
FRACTIONAL ±
ANGULAR: MACH ± BEND ±
TWO PLACE DECIMAL ±
THREE PLACE DECIMAL ±

INTERPRET GEOMETRIC
TOLERANCING PER:

MATERIAL

FINISH

DO NOT SCALE DRAWING

NAME DATE

DRAWN

CHECKED

ENG APPR.

MFG APPR.

Q.A.

COMMENTS:

TITLE:

SIZE

DWG. NO.

REV

A

MFS2XB

SCALE: 1:5

WEIGHT:

SHEET 1 OF 1



PROPRIETARY AND CONFIDENTIAL

THE INFORMATION CONTAINED IN THIS DRAWING IS THE SOLE PROPERTY OF <INSERT COMPANY NAME HERE>. ANY REPRODUCTION IN PART OR AS A WHOLE WITHOUT THE WRITTEN PERMISSION OF <INSERT COMPANY NAME HERE> IS PROHIBITED.

NEXT ASSY

USED ON

APPLICATION

2

1