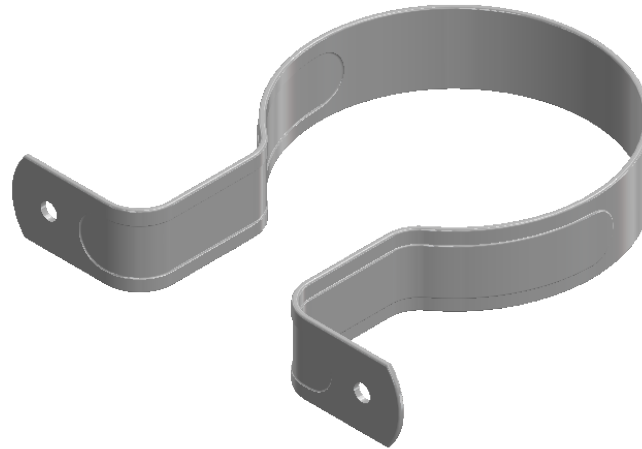
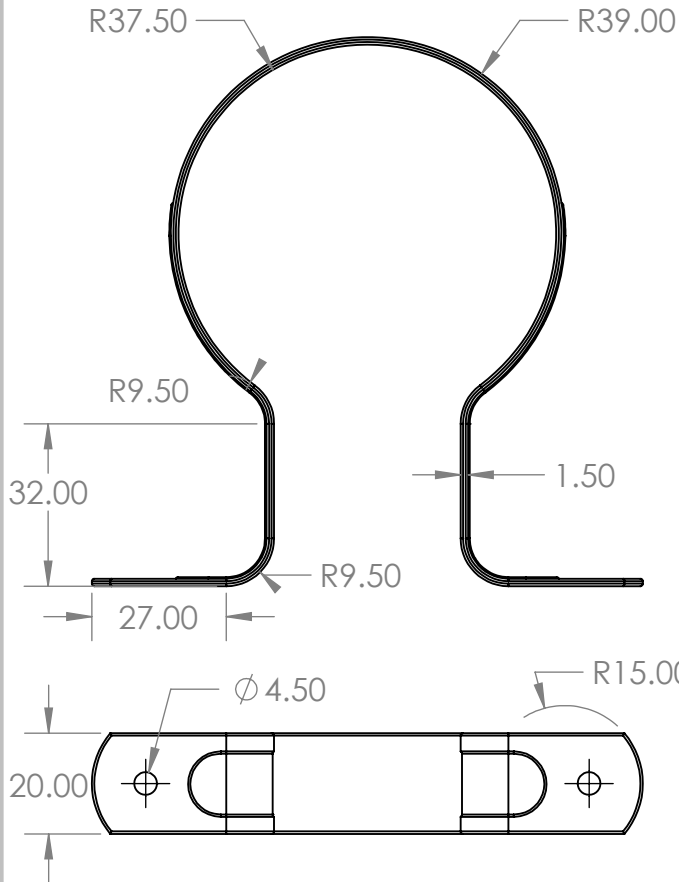


2

1

Saddle DWV Pipe 65mm N/C Standoff



Description

- Complies to AS/NZS 3500
- Protected against electrolysis, corrosion and water hammering
- Suits DWV Low Pressure drainage Pipes

B

B

A

A



PROPRIETARY AND CONFIDENTIAL

THE INFORMATION CONTAINED IN THIS DRAWING IS THE SOLE PROPERTY OF AZTEC AUSTRALASIA. ANY REPRODUCTION IN PART OR AS A WHOLE WITHOUT THE WRITTEN PERMISSION OF AZTEC AUSTRALASIA IS PROHIBITED.

| | | | | | |
|-------------|---------|--------------------------------------|-----------|------|------|
| | | UNLESS OTHERWISE SPECIFIED: | | NAME | DATE |
| | | DIMENSIONS ARE IN INCHES | DRAWN | | |
| | | TOLERANCES: | CHECKED | | |
| | | FRACTIONAL \pm | ENG APPR. | | |
| | | ANGULAR: MACH \pm BEND \pm | MFG APPR. | | |
| | | TWO PLACE DECIMAL \pm | Q.A. | | |
| | | THREE PLACE DECIMAL \pm | COMMENTS: | | |
| | | INTERPRET GEOMETRIC TOLERANCING PER: | | | |
| | | MATERIAL | | | |
| | | FINISH | | | |
| NEXT ASSY | USED ON | | | | |
| APPLICATION | | DO NOT SCALE DRAWING | | | |

TITLE:

SIZE DWG. NO. REV

A IGSO65DWVNC

SCALE: 1:2 WEIGHT: SHEET 1 OF 1

2

1