

# MASTER FLASH® ROUND BASE

## SIZING CHART:

Check diameter of pipe. Select the appropriate **Master Flash® Round Base** for pipe or duct diameter. Only use maximum pipe diameters on minimal roof angles. For extreme pitch or surface irregularity select next larger size.



BRIGHT RED



GREY



LIGHT BLUE



TERRA COTTA



DARK BLUE



BLACK



DARK GREEN



WHITE



LIGHT GREEN



BROWN

	Pipe Size	Compound	Part No.		Flashing Details
#1	6mm- 63mm	Black EPDM	MFR1B		A-Overall height - 70mm
		Grey EPDM	MFR1G		B-Base dimensions -120mm
		Red Silicone	MFR1S		
#2	44mm-76mm	Black EPDM	MFR2B		A-Overall height - 88mm
		Grey EPDM	MFR2G		B-Base dimension -158mm
		Red Silicone	MFR2S		
#3	6mm-127mm	Black EPDM	MFR3B		A-Overall height - 92mm
		Grey EPDM	MFR3G		B-Base dimensions - 196mm
		Red Silicone	MFR3S		
#4	76mm-159mm	Black EPDM	MFR4B		A-Overall height - 112mm
		Grey EPDM	MFR4G		B-Base dimensions - 235mm
		Red Silicone	MFR4S		
#5	108mm-197mm	Black EPDM	MFR5B		A-Overall height - 115mm
		Grey EPDM	MFR5G		B-Base dimensions - 273mm
		Red Silicone	MFR5S		
#6	127mm-229mm	Black EPDM	MFR6B		A-Overall height - 145mm
		Grey EPDM	MFR6G		B-Base dimensions - 320mm
		Red Silicone	MFR6S		
#7	152mm-280mm	Black EPDM	MFR7B		A-Overall height - 145mm
		Grey EPDM	MFR7G		B-Base dimensions - 370mm
		Red Silicone	MFR7S		
#8	179mm-330mm	Black EPDM	MFR8B		A-Overall height - 145mm
		Grey EPDM	MFR8G		B-Base dimensions - 420mm
		Red Silicone	MFR8S		
#9	229mm-483mm	Black EPDM	MFR9B		A-Overall height - 190mm
		Grey EPDM	MFR9G		B-Base dimensions - 640mm
		Red Silicone	MFR9S		

# MASTER FLASH® ROUND BASE

Available in:  
**2 Compounds**  
(Black or Grey EPDM  
& Red Silicone for extreme  
heat applications)

**25**  
**YEAR**  
WARRANTY



CODE: MFR3G



CODE: MFR1S

## All around design excellence



### Ozone and UV Protection

Flashings are made of EPDM and Silicone, and are designed for maximum resistance to all weather conditions.



### On-Site Customisation

Pipe diameters can be seen clearly for proper fitting.



### Adaptable Base

The base is designed to mould to most panel configurations and roof pitches regardless of pipe location.



### Fire Retarding Agents

The addition of fire retarding agents milled directly into the rubber compound creates a self extinguishing feature.



# MASTER FLASH® ROUND BASE



## Adaptable Base

Available in:

9  
Sizes

		Black & Grey EPDM	Red SILICONE
ADVANCED OZONE RESISTANCE tested to...		70 hour @ 500 pphm	70 hour @ 500 pphm
HIGH TEMPERATURE RESISTANCE Tested to...	Intermittent	+135°C	+260°C
	Continuous	+100°C	+225°C
LOW TEMPERATURE RESISTANCE tested to...		-55°C	-74°C
COMPRESSION SET minimum...		25%	50%

\*Complete specification data and testing methods are available upon request.

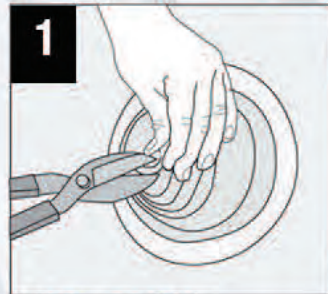
- **Range of BHP roofing colours available on request**
- **We also have a range to cover 0-724mm in our Metal Roof Square Base Range**

Easy  
5 minute  
On-Site  
Installation

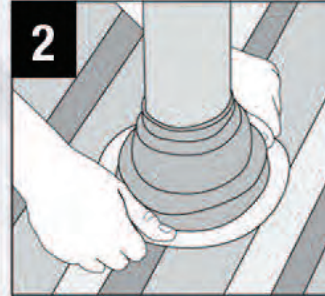
With **MASTER FLASH®** 25 Year Warranty,  
we've got it covered.



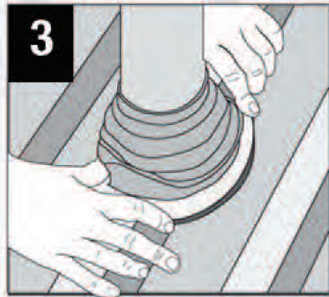
# MASTER FLASH® INSTALLATION GUIDE



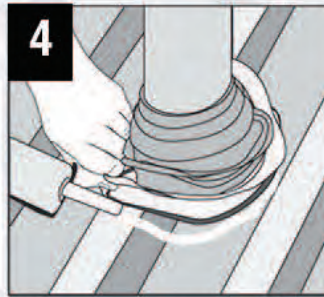
**1**  
Choose pipe opening and trim



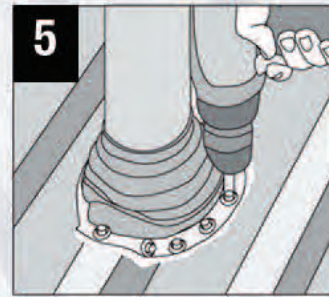
**2**  
Slide over pipe



**3**  
Form to roof profile



**4**  
Apply sealant



**5**  
Fasten to complete

- Range of BHP roofing colours available on request
- We also have a range to cover 0-724mm in our Metal Roof Square Base Range

Easy  
5 minute  
On-Site  
Installation

With **MASTER FLASH®** 25 Year Warranty,  
we've got it covered.

**25**  
YEAR  
WARRANTY