

MASTER FLASH® MULTI-FLASH

SIZING CHART:

Check diameter of pipe. Select the appropriate Master Flash® Multi-Flash for pipe or duct diameter. Only use maximum pipe diameters on minimal roof angles. For extreme pitch or surface irregularity select next larger size. Then refer to the part number for the Master Flash® Multi-Flash desired.



25
YEAR
WARRANTY

2 FLASHINGS IN 1

	Pipe Size	Compound	Part No.		Flashing Details	
Multi Port #1	STANDARD 6mm - 70mm	Black EPDM	MFMP1B		A - Top closed	Closed
		Grey EPDM	MFMP1G		B - Overall height	57mm
		Red Silicone	MFMP1S		C - Base dimensions	114mm
#2	STANDARD 22mm - 101mm	Black EPDM	MFMP2B		A - Top opening diameter	20mm
		Grey EPDM	MFMP2G		B - Overall height	75mm
		Red Silicone	MFMP2S		C - Base dimensions	152mm
#3	STANDARD 6mm - 146mm	Black EPDM	MFMP3B		A - Top closed	Closed
		Grey EPDM	MFMP3G		B - Overall height	79mm
		Red Silicone	MFMP3S		C - Base dimensions	233mm
#4	STANDARD 70mm - 177mm	Black EPDM	MFMP4B		A - Top opening diameter	70mm
		Grey EPDM	MFMP4G		B - Overall height	98mm
		Red Silicone	MFMP4S		C - Base dimensions	254mm
#5	STANDARD 101mm - 209mm	Black EPDM	MFMP5B		A - Top opening diameter	101mm
		Grey EPDM	MFMP5G		B - Overall height	120mm
		Red Silicone	MFMP5S		C - Base dimensions	276mm
#6	STANDARD 121mm - 254mm	Black EPDM	MFMP6B		A - Top opening diameter	121mm
		Grey EPDM	MFMP6G		B - Overall height	125mm
		Red Silicone	MFMP6S		C - Base dimensions	264mm
#7	STANDARD 140mm - 292mm	Black EPDM	MFMP7B		A - Top opening diameter	140mm
		Grey EPDM	MFMP7G		B - Overall height	140mm
		Red Silicone	MFMP7S		C - Base dimensions	355mm
#8	STANDARD 171mm - 343mm	Black EPDM	MFMP8B		A - Top opening diameter	171mm
		Grey EPDM	MFMP8G		B - Overall height	146mm
		Red Silicone	MFMP8S		C - Base dimensions	401mm
#9	STANDARD 241mm - 520mm	Black EPDM	MFMP9B		A - Top opening diameter	241mm
		Grey EPDM	MFMP9G		B - Overall height	148mm
		Red Silicone	MFMP9S		C - Base dimensions	635mm
Maxi	STANDARD 305mm - 724mm	Black EPDM	MFMPMaxiB		A - Top opening diameter	305mm
		Grey EPDM	MFMPMaxiG		B - Overall height	130mm
		Red Silicone	MFMPMaxiS		C - Base dimensions	664mm

*Gripper included

MASTER FLASH® MULTI-PORT

25
YEAR
WARRANTY



CODE: MFMP1B



CODE: MFMP1S

Up to 4 Cables or Wires per flashings.



1 Design 2 Applications Multiple Functions

- ✓ **Accommodates**
Up to 4 Cables or Wires per flashings.
Up to 9.6mm cable entry port
- ✓ **1 pipe** 6mm-70mm
- ✓ **No hassle**
One piece stainless steel gripper to secure retrofit applications
- ✓ **Fire Retarding Agents**
The addition of fire retarding agents milled directly into the rubber compound creates a self extinguishing feature.

MASTER FLASH® MULTI-PORT

1 Design 2 Applications Multiple Functions

Available in:
2 Compounds
(Black or Grey EPDM
& Red Silicone for extreme
heat applications)

		Black & Grey EPDM	Red SILICONE
ADVANCED OZONE RESISTANCE tested to...		70 hour @ 500 ppm	70 hour @ 500 ppm
HIGH TEMPERATURE RESISTANCE Tested to...	Intermittent	+135°C	+260°C
	Continuous	+100°C	+225°C
LOW TEMPERATURE RESISTANCE tested to...		-65°C	-74°C
COMPRESSION SET minimum...		25%	50%

*Complete specification data and testing methods are available upon request.

Sizing Chart

	Pipe Size	Compound	Part No.		Fishing Details	
Multi Port #1	6mm - 70mm	Black EPDM	MFMP1B		A-Top closed	Closed
		Grey EPDM	MFMP1G		B-Overall Height:	67mm
		Red Silicone	MFMP1S		C-Base dimensions	114mm

- **Multi purpose applications**
- **One piece stainless steel gripper makes for a quick installation**
- **Extra ports to assist with electrical cable entry points**
- **Stainless steel gripper included**

Easy
5 minute
On-Site
Installation

With **MASTER FLASH®** 25 Year Warranty,
we've got it covered.

25
YEAR
WARRANTY

MASTER FLASH® MULTI-FLASH

Pipe Size
Range
6mm -
724mm

25
YEAR
WARRANTY



CODE: MFMF6B

Available in:
2 Compounds
(Black or Grey EPDM
& Red Silicone for extreme
heat applications)



10 Sizes
2 Flashings
in One

Slide over or wrap around
Multi-Flash® is available
in 2 compounds to handle
virtually all applications.



Weather Protection

Made of EPDM or Silicone, these flashings are compounded specifically for maximum resistance to weathering due to ozone and ultraviolet light.



Easy on-site Customizing

Smooth cut is intended to eliminate use of razor blades. One piece stainless steel gripper to secure a retro custom fit. (Grippers included).



Fire Retarding Agents

The addition of fire retarding agents milled directly into the rubber compound creates a self extinguishing feature.

MASTER FLASH® INSTALLATION GUIDE

Standard



1 Measure for correct pipe size.



2 Choose pipe opening and trim.



3 Form flashing to roof profile.



4 Apply sealant.



5 Fasten flashing to complete.

Retrofit



1 Measure for correct pipe size.



2 Choose pipe opening and trim.



3 Cut flashing to fit pipe size.



4 Form flashing to roof profile.



5 Apply sealant.



6 Cut gripper to fit.



7 Crimp gripper to flashing with piece.



8 Fasten flashing to complete.



9 Complete installation.

HINT:

When using MasterFlash Multiflash in a Retrofit Application, ensure to use the one piece stainless steel gripper

Easy
5 minute
On-Site
Installation

With **MASTER FLASH®** 25 Year Warranty,
we've got it covered.

25
YEAR
WARRANTY

MASTER FLASH® UNIVERSAL RETROFIT




SIZING CHART:

Check diameter of pipe. Select the appropriate **Master Flash® Universal Retrofit** for pipe or duct diameter. Only use maximum pipe diameters on minimal roof angles. For extreme pitch or surface irregularity select next larger size.

Available in:

2 Compounds

(Black or Grey EPDM
& Red Silicone for extreme
heat applications)

	Pipe Size	Compound	Part No.		Flashing Details	
#1	19mm - 69mm	Black EPDM	MFRF1B		A - Top opening diameter	19mm
		Grey EPDM	MFRF1G		B - Cut to suit pipe size	19mm - 69mm
		Red Silicone	MFRF1S		C - Base diameter	100mm
#2	50mm - 184mm	Black EPDM	MFRF2B		A - Top opening diameter	50mm
		Grey EPDM	MFRF2G		B - Cut to suit pipe size	50mm - 184mm
		Red Silicone	MFRF2S		C - Base diameter	270mm
#3	95mm - 254mm	Black EPDM	MFRF3B		A - Top opening diameter	95mm
		Grey EPDM	MFRF3G		B - Cut to suit pipe size	95mm - 254mm
		Red Silicone	MFRF3S		C - Base diameter	366mm

- Round base universal retrofit
- Conforms to most roofing profiles

Easy
5 minute
On-Site
Installation

With **MASTER FLASH® 25 Year Warranty**,
we've got it covered.

25
YEAR
WARRANTY

MASTER FLASH® UNIVERSAL RETROFIT

Easy wrap
around flashing
with interlocking
gripper
included

25
YEAR
WARRANTY



CODE: MFRF2B



CODE: MFRF2S

Universal Retrofit



Weather Protection

These flashings are compounded specifically for maximum resistance to weathering due to ozone and ultraviolet light.



Flexible Base

Easily forms to contours of roof panel



Pipe Diameters

Pipe diameters can be seen clearly for correct fitting.



Fire Retarding Agents

The addition of fire retarding agents milled directly into the rubber compound creates a self extinguishing feature



MASTER FLASH® UNIVERSAL RETROFIT



Available in:

2 Compounds

(Black or Grey EPDM
& Red Silicone for extreme
heat applications)

		Black & Grey EPDM	Red SILICONE
ADVANCED OZONE RESISTANCE tested to...		70 hour @ 500 pphm	70 hour @ 500 pphm
HIGH TEMPERATURE RESISTANCE Tested to...	Intermittent	+135°C	+260°C
	Continuous	+100°C	+225°C
LOW TEMPERATURE RESISTANCE tested to...		-55°C	-74°C
COMPRESSION SET minimum...		25%	50%

*Complete specification data and testing methods are available upon request.

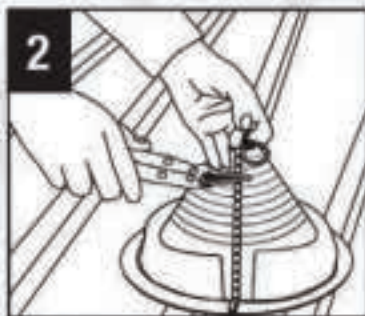
- **Round Base Universal Retrofit**
- **Conforms to most roofing profiles**

Easy
5 minute
On-Site
Installation

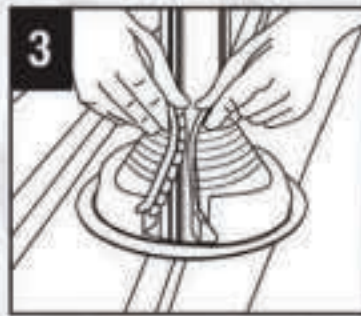
With **MASTER FLASH®** 25 Year Warranty,
we've got it covered.

25
YEAR
WARRANTY

MASTER FLASH® INSTALLATION GUIDE



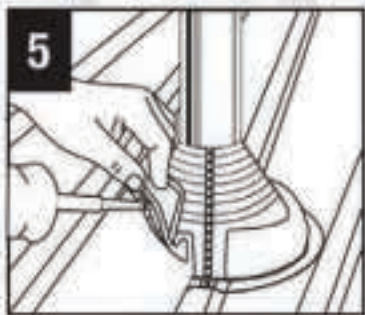
Using tin snips, cut the flashing to fit pipe, starting opposite the Gripper.



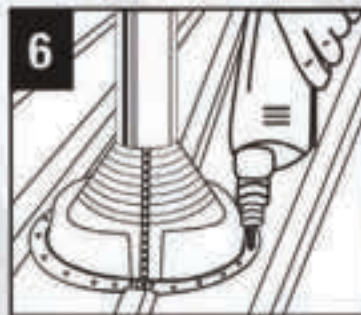
Wrap Retrofit around pipe, join the interlocking teeth starting from the top and proceeding down.



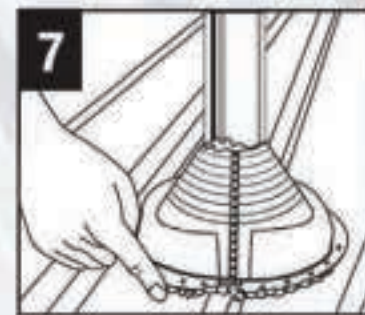
Squeeze Gripper tightly with pliers to crimp, start at the top and work down to the base.



Apply sealant to the underside of the base. Shape Retrofit to roof by pressing the aluminium base to the roof contours.



Fasten Retrofit to roof using self-drilling screws. Leave no gaps between base and the roof contours.



Apply additional sealant to Gripper joiner seam and to all areas that could be a potential leak risk.

Easy
5 minute
On-Site
Installation

With **MASTER FLASH®** 25 Year Warranty,
we've got it covered.

25
YEAR
WARRANTY